

Able Home Inspection

Matrix: Drinking Water



(978) 499-2360

Client:

Sample Location

This sample taken by Dennis at 4:00:00 PM on 6/21/2010. . Point of collection: Kitchen

**Comprehensive Scan Report**ResultsPublic Drinking Water EPA LimitsGeneral Bacteria

Total Coliform	Absent	Animal or Vegetational Bacteria	0
Fecal/E. Coli	Absent	Animal Bacteria	0

General Chemistry

Sodium	13.6 mg/L	20.0 mg/L is Mass. DEP Guideline	250.0 mg/L
Potassium	0.69 mg/L	A Component of Salt	No Limit
Copper	Not Detected	Indicates Plumbing Corrosion	1.30 mg/L
Iron	0.02 mg/L	Brown Stains, Bitter Taste	0.30 mg/L
Manganese	Not Detected	May Cause Laundry Staining	0.05 mg/L
Magnesium	0.40 mg/L	A Component of Hardness	No Limit
Calcium	4.4 mg/L	A Component of Hardness	No Limit
Arsenic	Not Detected	Natural Occurring Element	0.010 mg/L
Zinc.	0.17 mg/L	A Toxic Metal	5.0 mg/L
Lead	Not Detected	A Toxic Metal	0.015 mg/L
pH	7.71 SU	Acid/Basic Determination	6.5 - 8.5 SU
Turbidity	0.50 N.T.U.	Presence of Particles	No Limit
Color	Not Detected	Clarity (0), Discoloration (15)	15.0 C.U.
Odor	1.0 T.O.N.	Odor due to Contamination	3.0 T.O.N.
Conductivity	88.0 umhos	Electrical Resistance (umhos/cm)	No Limit
T.D.S.	52.8 mg/L	Total Dissolved Minerals Present	500.0 mg/L
Sediment	Absent	Undissolved Solids	Present
Alkalinity	27.5 mg/L	Ability to Neutralize acid	No Limit
Chlorine	Not Detected	A Disinfectant	4.0 mg/L
Chloride	13.9 mg/L	A component of salt	250.0 mg/L
Hardness	12.6 mg/L	0 - 75 is considered soft	No Limit
Nitrate	Not Detected	Indicator of Biological Waste	10.0 mg/L
Nitrite	Not Detected	Indicator of Waste	1.0 mg/L
Ammonia	Not Detected	Indicator of Waste	No Limit
Sulfate	6.0 mg/L	A Mineral, Can Cause Odor	250.0 mg/L

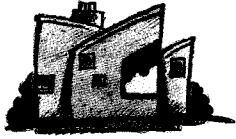
Radiochemistry

Radon in Water	Not Detected	NH DEP proposed guideline	2000 pCi/L
----------------	--------------	---------------------------	------------

Organic Analysis

Benzene	Not Detected		5.0 ug/L
Bromobenzene	Not Detected		No Limit

The integrity of the sample and results are dependent on the quality of sampling. The results apply only to the actual sample tested. Environmental Testing and Research Laboratories shall be held harmless from any liability arising out of the use of such results.



Phone (978) 499-2360

Client:

Sample Location



This sample taken by Dennis at 4:00:00 PM on 6/21/2010. . Point of collection: Kitchen

**Comprehensive Scan Report**

	<u>Results</u>	<u>Public Drinking Water EPA Limits</u>
Bromochloromethane	Not Detected	No Limit
Bromodichloromethane	15.0 ug/L	No Limit
Bromoform	Not Detected	No Limit
Bromomethane	Not Detected	No Limit
n-Butylbenzene	Not Detected	No Limit
sec-Butylbenzene	Not Detected	No Limit
tert-Butylbenzene	Not Detected	No Limit
Carbon-Tetrachloride	Not Detected	5.0 ug/L
Chlorodibromomethane	1.3 ug/L	No Limit
Chloroethane	Not Detected	No Limit
Chloroform	98.6 ug/L	No Limit
Chloromethane	Not Detected	No Limit
1,2-Chlorotoluene	Not Detected	No Limit
1,4-Chlorotoluene	Not Detected	No Limit
1,2-Dibromo-3-chloropropane	Not Detected	No Limit
Dibromomethane	Not Detected	No Limit
1,2-Dibromomethane	Not Detected	No Limit
1,3-Dichlorobenzene	Not Detected	No Limit
1,2-Dichlorobenzene	Not Detected	600.0 ug/L
1,4-Dichlorobenzene	Not Detected	5.0 ug/L
Dichlorodifluoromethane	Not Detected	No Limit
1,1-Dichloroethane	Not Detected	No Limit
1,2-Dichloroethane	Not Detected	5.0 ug/L
1,1-Dichloroethylene	Not Detected	7.0 ug/L
cis-1,2-Dichloroethene	Not Detected	70.0 ug/L
trans-1,2-dichloroethene	Not Detected	100.0 ug/L
1,2-Dichloropropane	Not Detected	5.0 ug/L
1,3-Dichloropropane	Not Detected	No Limit
2,2-Dichloropropane	Not Detected	No Limit
1,1-Dichloropropene	Not Detected	No Limit
1,3-Dichloropropene	Not Detected	No Limit
trans-1,3-Dichloropropene	Not Detected	No Limit
Ethylbenzene	Not Detected	700.0 ug/L
Fluorotrichloromethane	Not Detected	No Limit
Hexachlorobutadiene	Not Detected	No Limit
Isopropylbenzene	Not Detected	No Limit
p-Isopropyltoluene	Not Detected	No Limit

The integrity of the sample and results are dependent on the quality of sampling. The results apply only to the actual sample tested. Environmental Testing and Research Laboratories shall be held harmless from any liability arising out of the use of such results.



Phone (978) 499-2360

Client:  
Sample Location



This sample taken by Dennis at 4:00:00 PM on 6/21/2010. . Point of collection: Kitchen

**Comprehensive Scan Report**

	<u>Results</u>		<u>Public Drinking Water EPA Limits</u>
Methyl-t-Butyl Ether (MTBE)	1.2 ug/L	Massachusetts DEP Limit	70.0 ug/L
Methylene Chloride	Not Detected		5.0 ug/L
Monochlorobenzene	Not Detected		100.0 ug/L
Napthalene	Not Detected		No Limit
n-Propylbenzene	Not Detected		No Limit
Styrene	Not Detected		100.0 ug/L
1,1,1,2-Tetrachloroethane	Not Detected		No Limit
1,1,2,2-Tetrachloroethane	Not Detected		No Limit
Tetrachloroethylene	Not Detected		5.0 ug/L
Toluene	Not Detected		1000.0 ug/L
1,2,3-Trichlorobenzene	Not Detected		No Limit
1,2,4-Trichlorobenzene	Not Detected		70.0 ug/L
1,1,1-Trichloroethane	Not Detected		200.0 ug/L
1,1,2-Trichloroethane	Not Detected		5.0 ug/L
Trichloroethylene	Not Detected		5.0 ug/L
1,2,3-Trichloropropane	Not Detected		No Limit
1,2,4-Trimethylbenzene	Not Detected		No Limit
1,3,5-Trimethylbenzene	Not Detected		No Limit
Vinyl Chloride	Not Detected		2.0 ug/L
o-Xylene	Not Detected		Total Xylene 10 ug/
m+p Xylenes	Not Detected		Total Xylene 10 ug/

The integrity of the sample and results are dependent on the quality of sampling. The results apply only to the actual sample tested. Environmental Testing and Research Laboratories shall be held harmless from any liability arising out of the use of such results.